



**DICKINSON COUNTY TRANSFER STATION**

Derek Norrick, Director  
2363 Jeep Road  
Abilene, KS 67410  
(785)263-4780

**DICKINSON COUNTY TRANSFER STATION**

REGULAR HOURS OF OPERATION

M – F 9:00 AM – 4:45 PM

**\*ALL LOADS SHALL BE COVERED. METAL AND LIMBS SHALL BE TIED DOWN\***

**ACCEPTABLE MATERIALS AND THEIR RELATED FEES**

➤ **HOUSEHOLD TRASH**

**ABSOLUTELY NO METAL ACCEPTED WITH HOUSEHOLD WASTE, NO WOOD OVER 6' IN LENGTH**

\$10 PER LOAD UP TO 400 LBS. - \$62 PER TON FOR LOADS GREATER THAN 400 LBS.

➤ **FURNITURE & BEDDING**

\$10 PER LOAD UP TO 400 LBS. - \$62 PER TON FOR LOADS GREATER THAN 400 LBS.

➤ **TIRES**

**TIRES UP TO 15"**

\$2.00 PER TIRE

**16" – 11X245**

\$7.00 PER TIRE

**LARGER THAN 11X245**

\$15.00 PER TIRE

**\*\* FEE IS DOUBLED FOR TIRES ON RIMS \*\***

➤ **TREE LIMBS & BRUSH**

\$10 PER LOAD; FREE ON 4<sup>TH</sup> SATURDAY OF EACH MONTH

➤ **DECEASED ANIMALS**

**WEIGHING LESS THAN 80 LBS. AND MUST BE DOUBLE BAGGED IN HEAVY WEIGHT BAGS**

\$10 PER BAG

**WEIGHING MORE THAN 80 LBS. (PRIOR APPROVAL MUST BE OBTAINED BY THE DIRECTOR)**

\$200; 1<sup>ST</sup> CARCASS\*\* - \$100 EACH ADDITIONAL

\*\*PER LOAD (E.G. A CARCASS DISPOSED OF IN JAN. DOES NOT DISCOUNT A CARCASS DISPOSED OF IN JULY.)

➤ **ANIMAL WASTE**

**WEIGHING LESS THAN 80 LBS. AND MUST BE DOUBLE BAGGED IN HEAVY WEIGHT BAGS**

\$10 PER BAG

**MATERIALS ACCEPTED FREE OF CHARGE**

- HOUSEHOLD HAZARDOUS WASTE\*
- METAL AND APPLIANCES
- GAS TANKS (EMPTY)
- BATTERIES
- CLEAN WIRE
- E-WASTE\*
- USED MOTOR OIL
- OLD VEHICLES
- GRASS CLIPPINGS & LEAVES

**\* SEE REVERSE FOR FURTHER DETAILS**

**UNACCEPTABLE MATERIALS**

- EXPLOSIVES & AMMUNITION
- CREOSOTE (RAILROAD TIES. ETC.)
- ASBESTOS WASTE
- HAZARDOUS WASTE REQUIRING KDHE SPECIAL WASTE AUTHORIZATION

**OTHER CHARGES**

➤ **SCALE CHARGE - \$5.00**

➤ **UNCOVERED LOAD PENALTY - \$10.00**

## WHAT IS HOUSEHOLD HAZARDOUS WASTE?

HOUSEHOLD HAZARDOUS WASTE, OR HHW, IS THE MATERIAL LEFT OVER WHEN YOU ARE FINISHED WITH A PRODUCT CONTAINING HAZARDOUS SUBSTANCES LIKE THE ONES LISTED BELOW.



- OVEN CLEANERS
- DISINFECTANTS
- PHOTOGRAPHIC CHEMICALS
- TOILET CLEANERS
- BATTERIES (ALL TYPES)



- ENAMEL OR OIL BASED PAINTS
- LATEX OR WATER BASED PAINTS
- SPRAY PAINTS



- ANTIFREEZE
- TRANSMISSION FLUID
- BRAKE CLEANER



- HERBICIDES
- INSECTICIDES
- RODENT POISONS



- COMPUTERS
- TELEVISIONS & MONITORS
- VACUUMS

## HOUSEHOLD PRODUCTS

- DRAIN CLEANERS
- RUG & UPHOLSTERY CLEANERS
- FLOOR & FURNITURE POLISH
- BLEACH CLEANERS
- LIGHTBULBS



- MOTHBALLS
- POOL CHEMICALS
- ABRASIVE CLEANERS
- AMMONIA BASED CLEANERS
- THERMOMETERS (MERCURY)

## PAINTS

- PAINT THINNERS OR TURPENTINE
- FURNITURE STRIPPERS
- WOOD STAINS



- WOOD PRESERVATIVES
- EPOXY RESIN
- WOOD FINISHES

## AUTOMOTIVE PRODUCTS

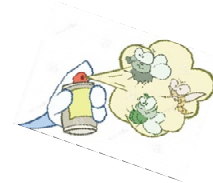
- MOTOR OIL (NEW OR USED)
- WASHER FLUID
- PENETRATING SPRAY



- OIL FILTERS
- BRAKE FLUID
- BATTERIES

## PESTICIDES & HERBICIDES

- CHLORINATED HYDROCARBONS
- ORGANO-PHOSPHATES
- ARSENICALS



- BOTANICALS
- CARBONATES
- FUNGICIDES

## WHAT IS E-WASTE?



ELECTRONIC WASTE, OR E-WASTE, REFERS TO PRODUCTS THAT HAVE COMPLETED THEIR USEFUL LIVES, SUCH AS THOSE LISTED BELOW.

- PRINTERS & COPIERS
- VCR & DVD PLAYERS
- CELL PHONES
- STEREOS
- CAMERAS
- MICROWAVES

WHEN YOU DISPOSE OF HOUSEHOLD HAZARDOUS WASTE OR ELECTRONIC WASTE AT FACILITIES SUCH AS OURS, YOU ARE GIVING NEW LIFE TO A PRODUCT THAT MAY HAVE OTHERWISE BEEN THROWN AWAY AND KEEPING POTENTIALLY TOXIC SUBSTANCES FROM CONTAMINATING OUR SOILS AND GROUNDWATER.

**CALL OUR OFFICE AT 785-263-4780 FOR MORE INFORMATION.**